

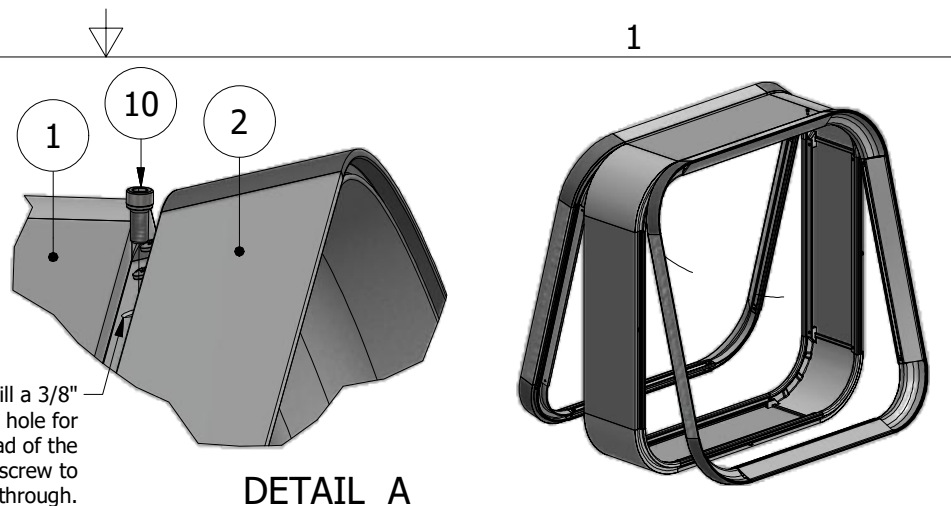
PARTS LIST			
ITEM	PART #	DESCRIPTION	NOTES
1	K2005/4100	Wide Body w/ 9in Radius Corners	Assembly
2	K2086/95/4250	Tension Frame II & Bleed Cover w/ 9in Radius Corners & Covers	Assembly
10	5170	Hinge Screw	Drill 3/8" pilot Hole
11	5180	Closure Screw	Drill 5/16" pilot hole

NOTE: PRE-CUT KITS ARE NOT PRE-DRILLED.
 (Holes shown in this drawing are for reference only.
 Drilling of pilot holes are to be done by fabricator.)

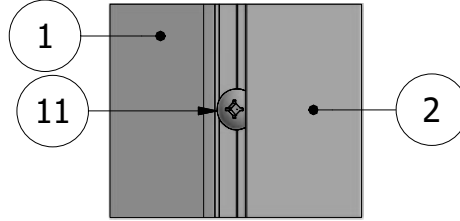
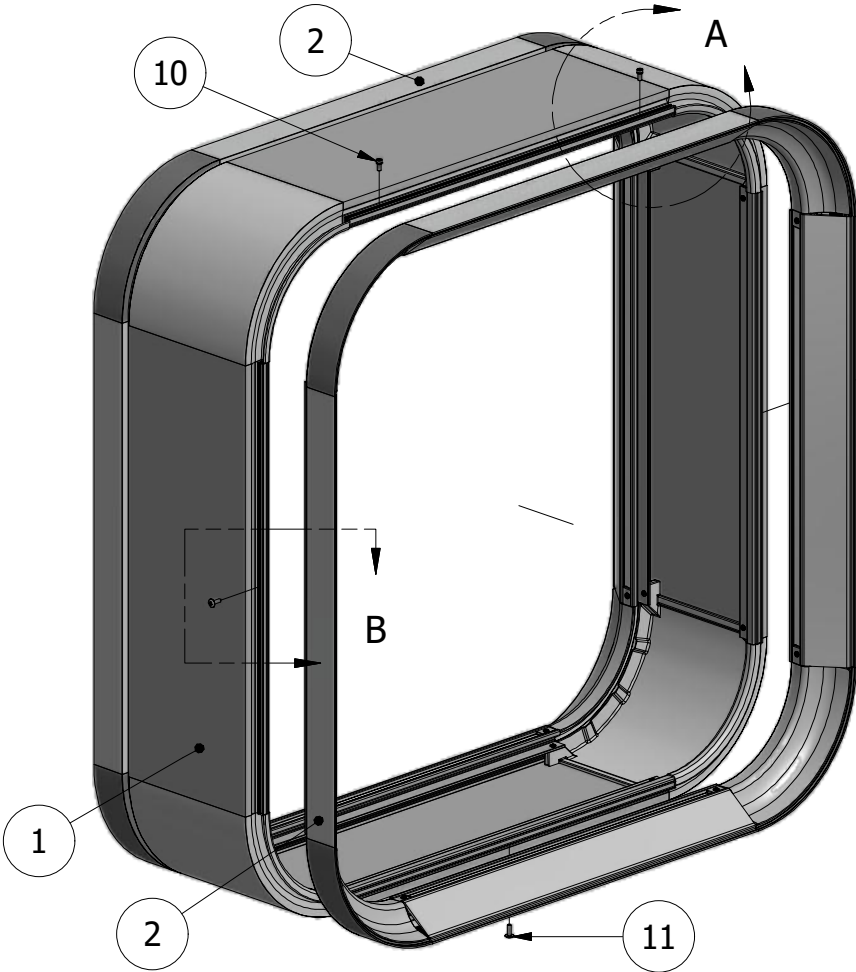
***NOTE:** Drill a 3/8" oversized hole for the head of the hinge screw to slip through.

***NOTE:** IT IS RECOMMENDED THAT THE FRAME BE ASSEMBLED ON THE BODY, THEN RATCHET STRAPPED TO CHECK FOR SQUARE, BEFORE THE FRAME IS WELDED OR MECHANICALLY FASTENED.

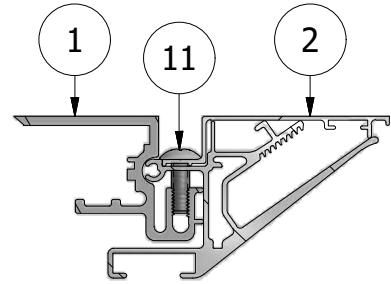
Ship To:
Sales Order #



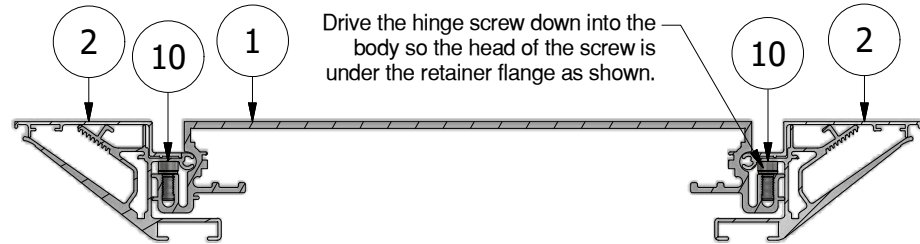
DETAIL A



DETAIL B
FRAME CLOSED



DETAIL B
CROSS-SECTION

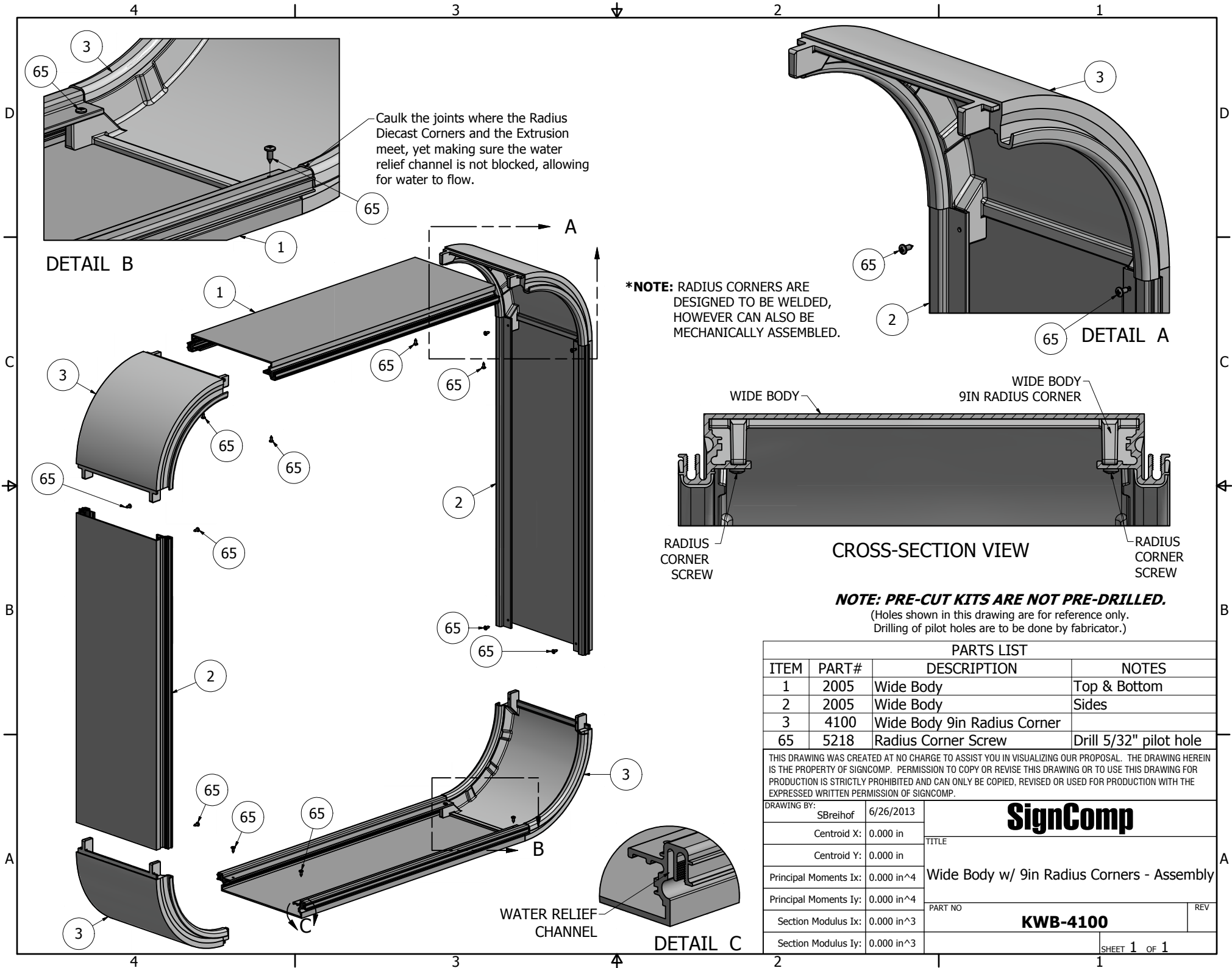


TOP CROSS-SECTION

THIS DRAWING WAS CREATED AT NO CHARGE TO ASSIST YOU IN VISUALIZING OUR PROPOSAL. THE DRAWING HEREIN IS THE PROPERTY OF SIGNCOMP. PERMISSION TO COPY OR REVISE THIS DRAWING OR TO USE THIS DRAWING FOR PRODUCTION IS STRICTLY PROHIBITED AND CAN ONLY BE COPIED, REVISED OR USED FOR PRODUCTION WITH THE EXPRESSED WRITTEN PERMISSION OF SIGNCOMP.

Project Name: Wide Body w/ Tension Frame II & Bleed Cover-9" Rad. Corners
 Sign Company: KWBJ/86/95/4527
 Revision: 5/13/2019
 Drawing By: SBreihof
 Sheet: 1 of 1
 Size: A





Caulk the joints where the Radius Diecast Corners and the Extrusion meet, yet making sure the water relief channel is not blocked, allowing for water to flow.

***NOTE:** RADIUS CORNERS ARE DESIGNED TO BE WELDED, HOWEVER CAN ALSO BE MECHANICALLY ASSEMBLED.

NOTE: PRE-CUT KITS ARE NOT PRE-DRILLED.
(Holes shown in this drawing are for reference only. Drilling of pilot holes are to be done by fabricator.)

PARTS LIST			
ITEM	PART#	DESCRIPTION	NOTES
1	2005	Wide Body	Top & Bottom
2	2005	Wide Body	Sides
3	4100	Wide Body 9in Radius Corner	
65	5218	Radius Corner Screw	Drill 5/32" pilot hole

THIS DRAWING WAS CREATED AT NO CHARGE TO ASSIST YOU IN VISUALIZING OUR PROPOSAL. THE DRAWING HEREIN IS THE PROPERTY OF SIGNCOMP. PERMISSION TO COPY OR REVISE THIS DRAWING OR TO USE THIS DRAWING FOR PRODUCTION IS STRICTLY PROHIBITED AND CAN ONLY BE COPIED, REVISED OR USED FOR PRODUCTION WITH THE EXPRESSED WRITTEN PERMISSION OF SIGNCOMP.

DRAWING BY:	SBreihof	6/26/2013
Centroid X:	0.000 in	
Centroid Y:	0.000 in	
Principal Moments Ix:	0.000 in ⁴	
Principal Moments Iy:	0.000 in ⁴	
Section Modulus Ix:	0.000 in ³	
Section Modulus Iy:	0.000 in ³	

SignComp

TITLE
Wide Body w/ 9in Radius Corners - Assembly

PART NO
KWB-4100

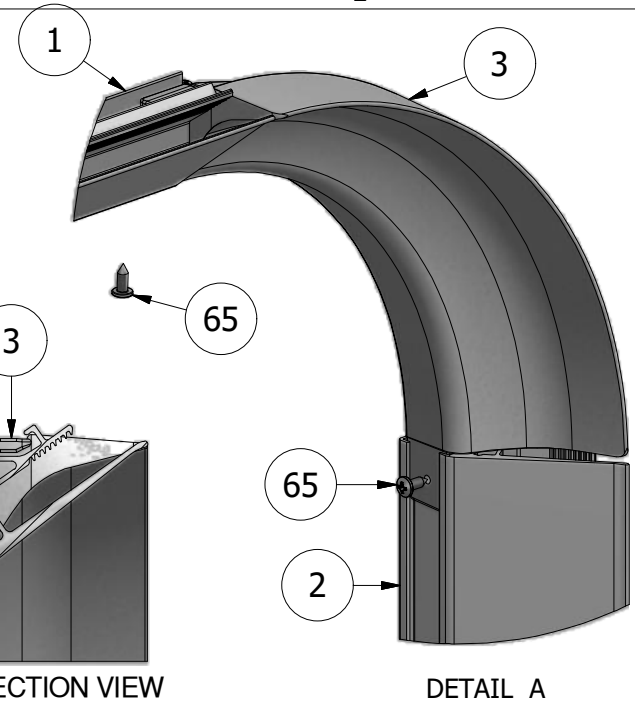
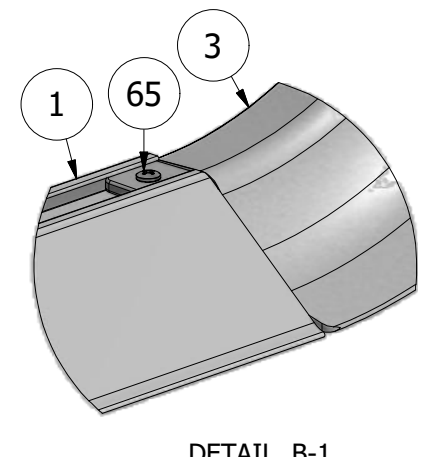
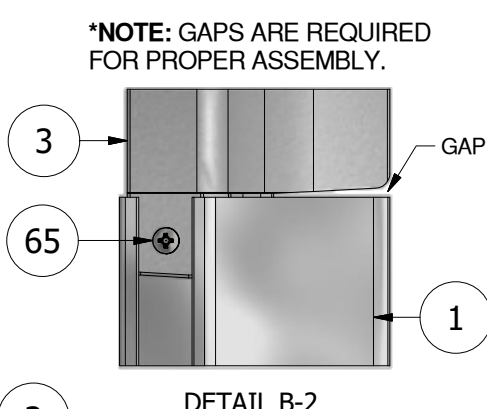
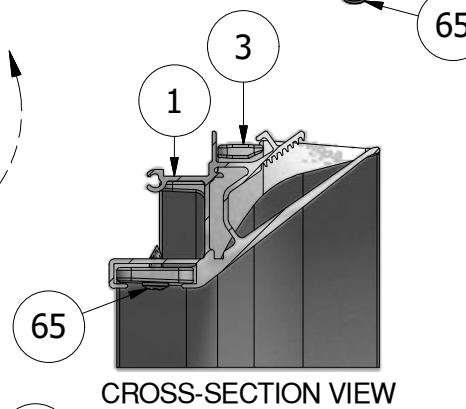
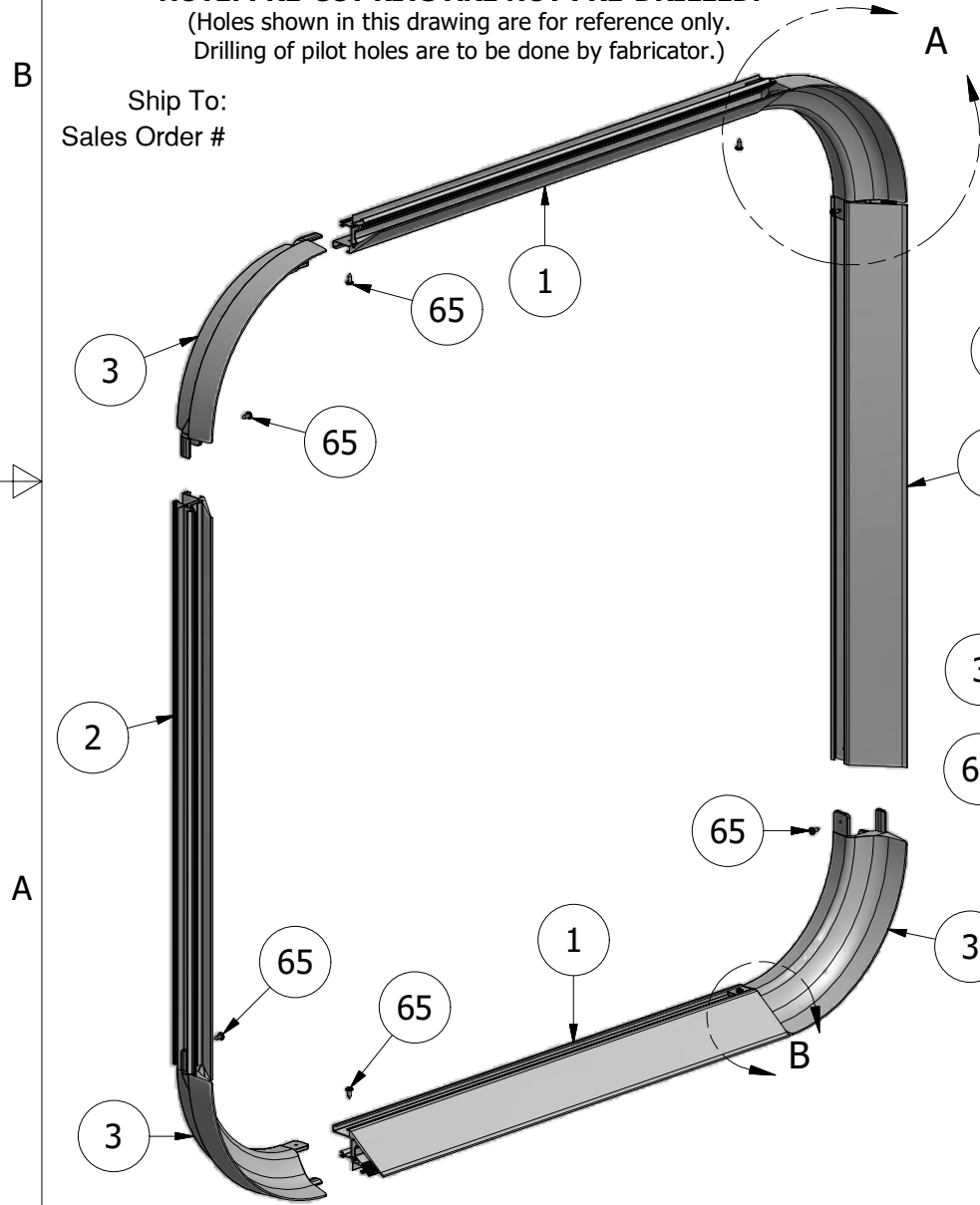
REV

SHEET 1 OF 1

PARTS LIST			
ITEM	PART #	DESCRIPTION	NOTES
1	2086	Tension Frame II	Top & Bottom
2	2086	Tension Frame II	Sides
3	4250	9in Tension Frame II Radius Corner	All 4 Corners
65	5218	Radius Corner Screw	Drill 5/32" pilot hole

NOTE: PRE-CUT KITS ARE NOT PRE-DRILLED.
 (Holes shown in this drawing are for reference only.
 Drilling of pilot holes are to be done by fabricator.)

Ship To:
 Sales Order #



***NOTE: IT IS RECOMMENDED THAT THE FRAME BE ASSEMBLED ON THE BODY, THEN RATCHET STRAPPED TO CHECK FOR SQUARE, BEFORE THE FRAME IS WELDED OR MECHANICALLY FASTENED.**

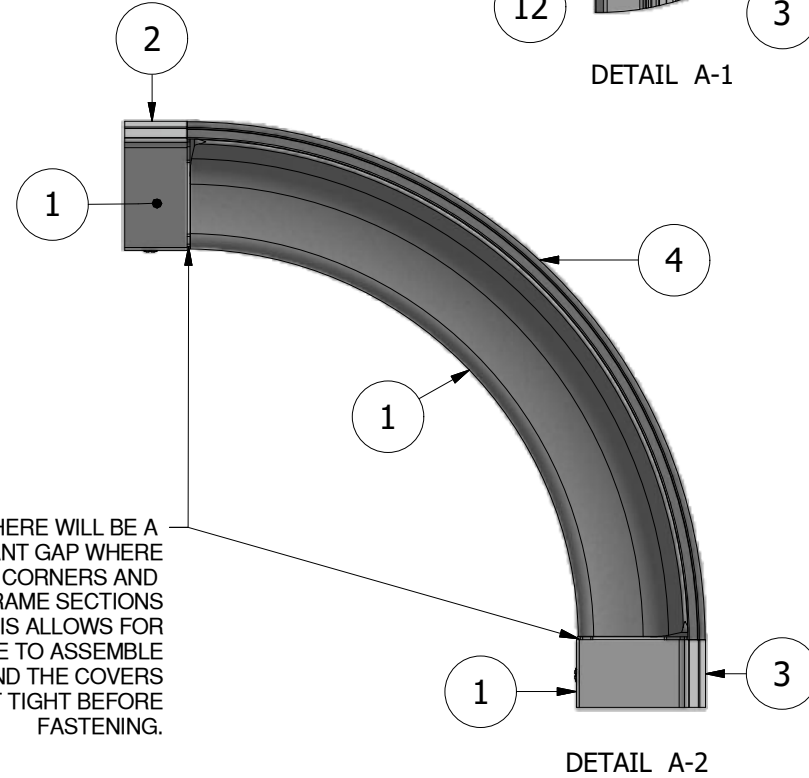
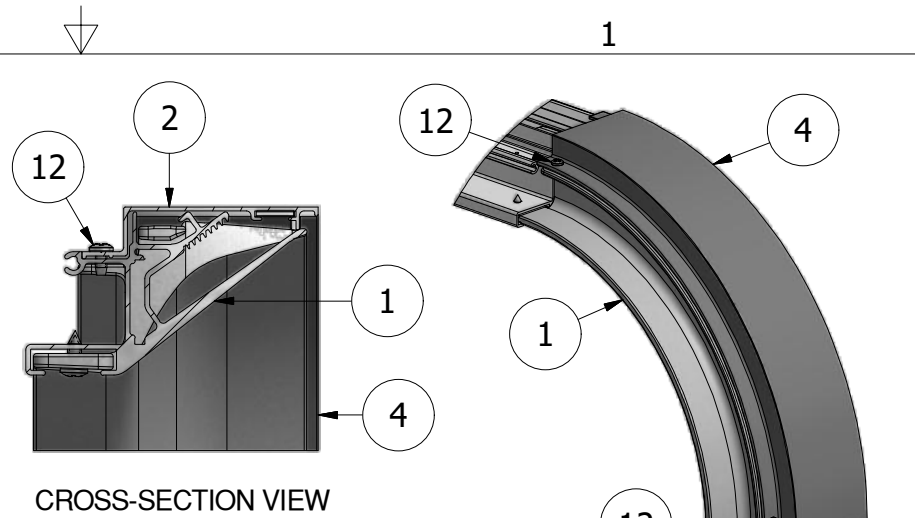
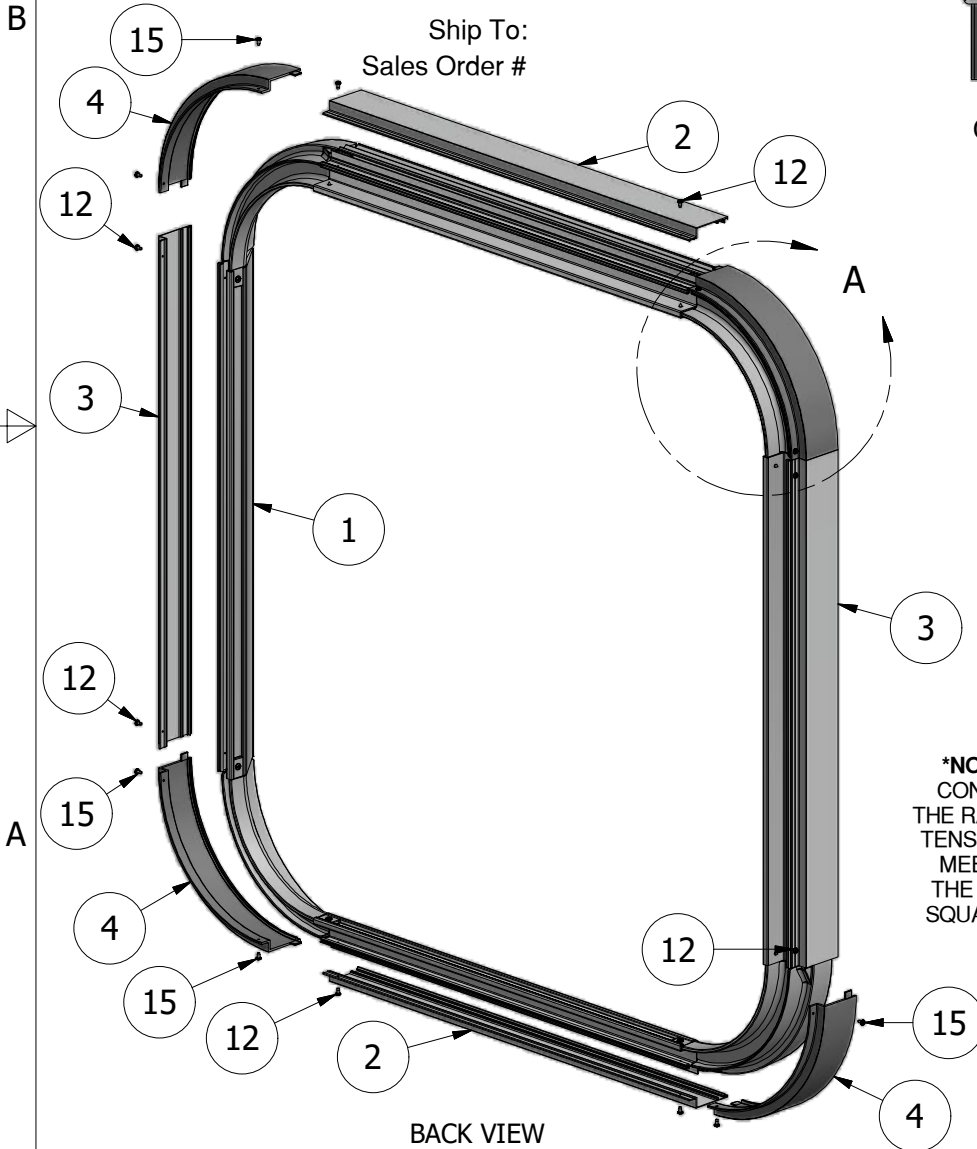
THIS DRAWING WAS CREATED AT NO CHARGE TO ASSIST YOU IN VISUALIZING OUR PROPOSAL. THE DRAWING HEREIN IS THE PROPERTY OF SIGNCOMP. PERMISSION TO COPY OR REVISE THIS DRAWING OR TO USE THIS DRAWING FOR PRODUCTION IS STRICTLY PROHIBITED AND CAN ONLY BE COPIED, REVISED OR USED FOR PRODUCTION WITH THE EXPRESSED WRITTEN PERMISSION OF SIGNCOMP.

Project Name: Tension Frame II with 9" Rad. Corners - Assembly
 Sign Company: K2086-4250
 Revision: 5/14/2019
 Date: 5/14/2019
 Drawing By: SBreihof
 Sheet: 1 of 1
 Size: A



PARTS LIST

ITEM	PART #	DESCRIPTION	NOTES
1	K2086/4250	Tension Frame II w/ 9in Radius Corners	Assembly
2	2095	Bleed Tension Frame Cover	Top & Bottom
3	2095	Bleed Tension Frame Cover	Sides
4	4260P	9in Bleed Tension Frame Radius Cover	
12	5195	Cover Screw	Pre-drill 3/32" hole
15	5195	Radius Corner Cover Screw	Pre-drill 3/32" hole



NOTE: PRE-CUT KITS ARE NOT PRE-DRILLED.
(Holes shown in this drawing are for reference only.
Drilling of pilot holes are to be done by fabricator.)

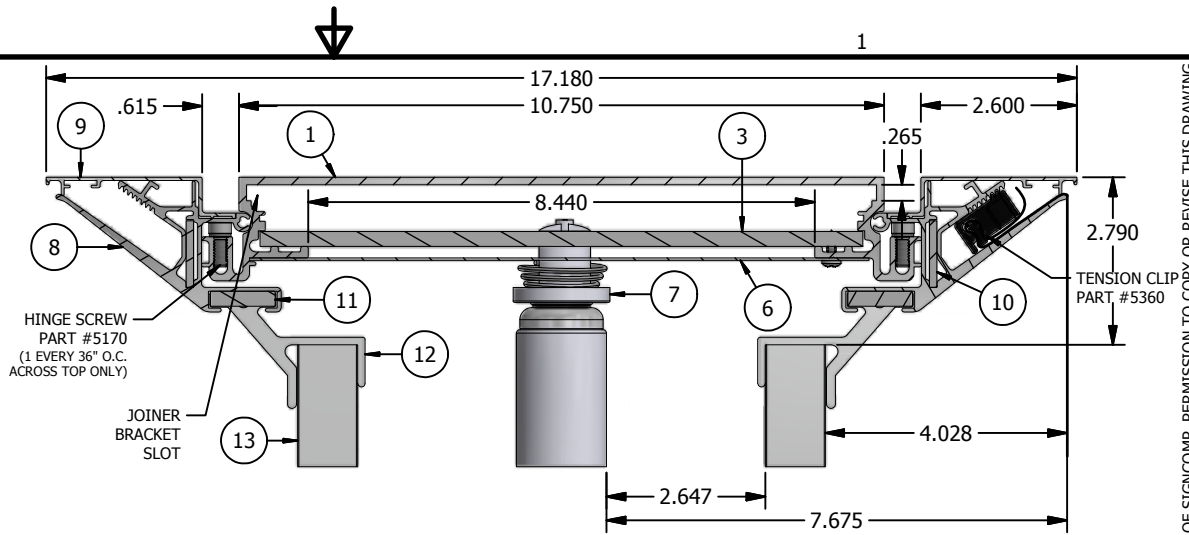
THIS DRAWING WAS CREATED AT NO CHARGE TO ASSIST YOU IN VISUALIZING OUR PROPOSAL. THE DRAWING HEREIN IS THE PROPERTY OF SIGNCOMP. PERMISSION TO COPY OR REVISE THIS DRAWING OR TO USE THIS DRAWING FOR PRODUCTION IS STRICTLY PROHIBITED AND CAN ONLY BE COPIED, REVISED OR USED FOR PRODUCTION WITH THE EXPRESSED WRITTEN PERMISSION OF SIGNCOMP.

Project Name:	Tension Frame II and Bleed Cover - 9" Rad. Covers - Assembly
Sign Company:	K2086-95-4260P
Part #:	
Revision:	
Date:	5/14/2019
Sheet:	1 of 1
Size:	A
Drawing By:	SBreihof

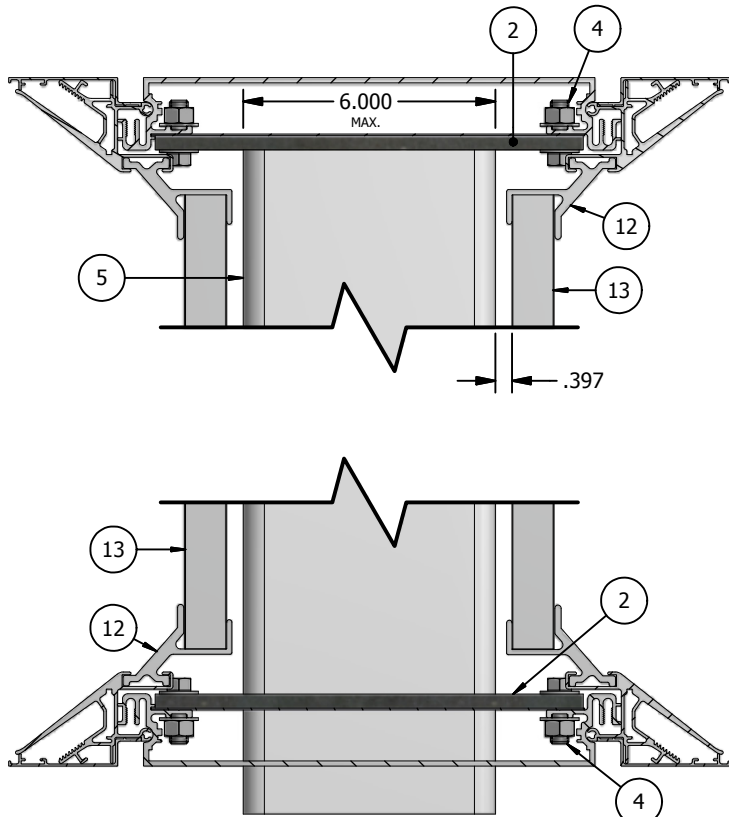
SignComp

ITEM	PART #	DESCRIPTION
1	2005	Wide Body
2		WB Support Mounting Plate - By Other
3	5312	Wide Body Corner Angle
4		Main Support Plate Bolt Assembly
5		Main Support - By Other
6	5116	Raceway Cover - Blank
7	Lamp End	Lamp & Socket
8	2086	Tension Frame II
10	5210	Corner Key
11	5305	Frame Corner Angle
12	5352	Small Frame Brace
9	2095	Bleed Tension Frame Cover
13	2177	Small Frame Support Tube

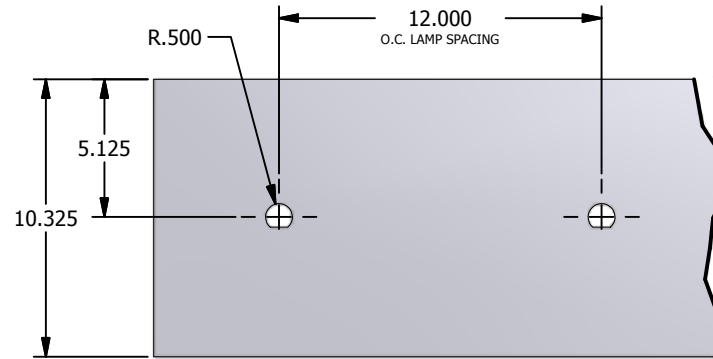
NOTE:
All structural detailing for sign construction is the sole responsibility of the sign contractor. All details shown here should be considered as **DESIGN INTENT ONLY**. The sign fabricator shall provide engineering drawings stamped by a licenced structural engineer.



SECTION VIEW - ELECTRICAL



SECTION VIEW - STRUCTURAL



RACEWAY D-PUNCH DETAIL

NOTES:

1. ADD 1" TO SIZE OF CABINET (VERTICAL OR HORIZONTAL) WHEN THE SIZE OF THE CABINET IS THE SAME SIZE AS THE NOMINAL LAMP LENGTH.
2. SIGNCOMP DOES NOT SUPPLY THE BALLAST(S).
3. SIGNCOMP DOES NOT SUPPLY MAIN SUPPORT.

THIS DRAWING WAS CREATED AT NO CHARGE TO ASSIST YOU IN VISUALIZING OUR PROPOSAL. THE DRAWING HEREIN IS THE PROPERTY OF SIGNCOMP. PERMISSION TO COPY OR REVISE THIS DRAWING OR TO USE THIS DRAWING FOR PRODUCTION IS STRICTLY PROHIBITED AND CAN ONLY BE COPIED, REVISED OR USED FOR PRODUCTION WITH THE EXPRESSED WRITTEN PERMISSION OF SIGNCOMP.

Project Name:	WB w/ Tension Frame II & Cover - Cross Sect.
Sign Company:	SignComp
Revision:	9/17/2014
Drawing By:	SBreihof
Sheet:	1 of 1
Size:	A

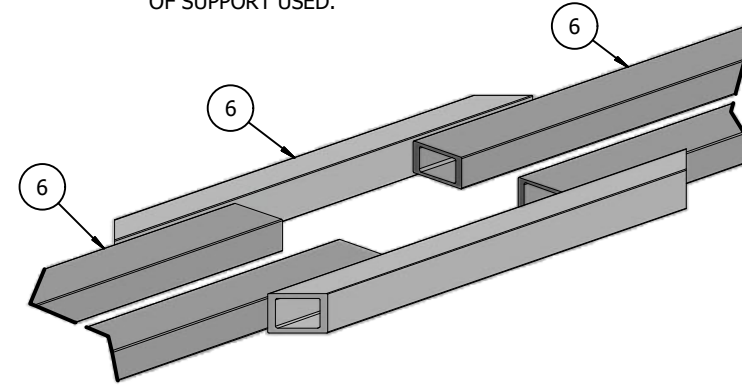
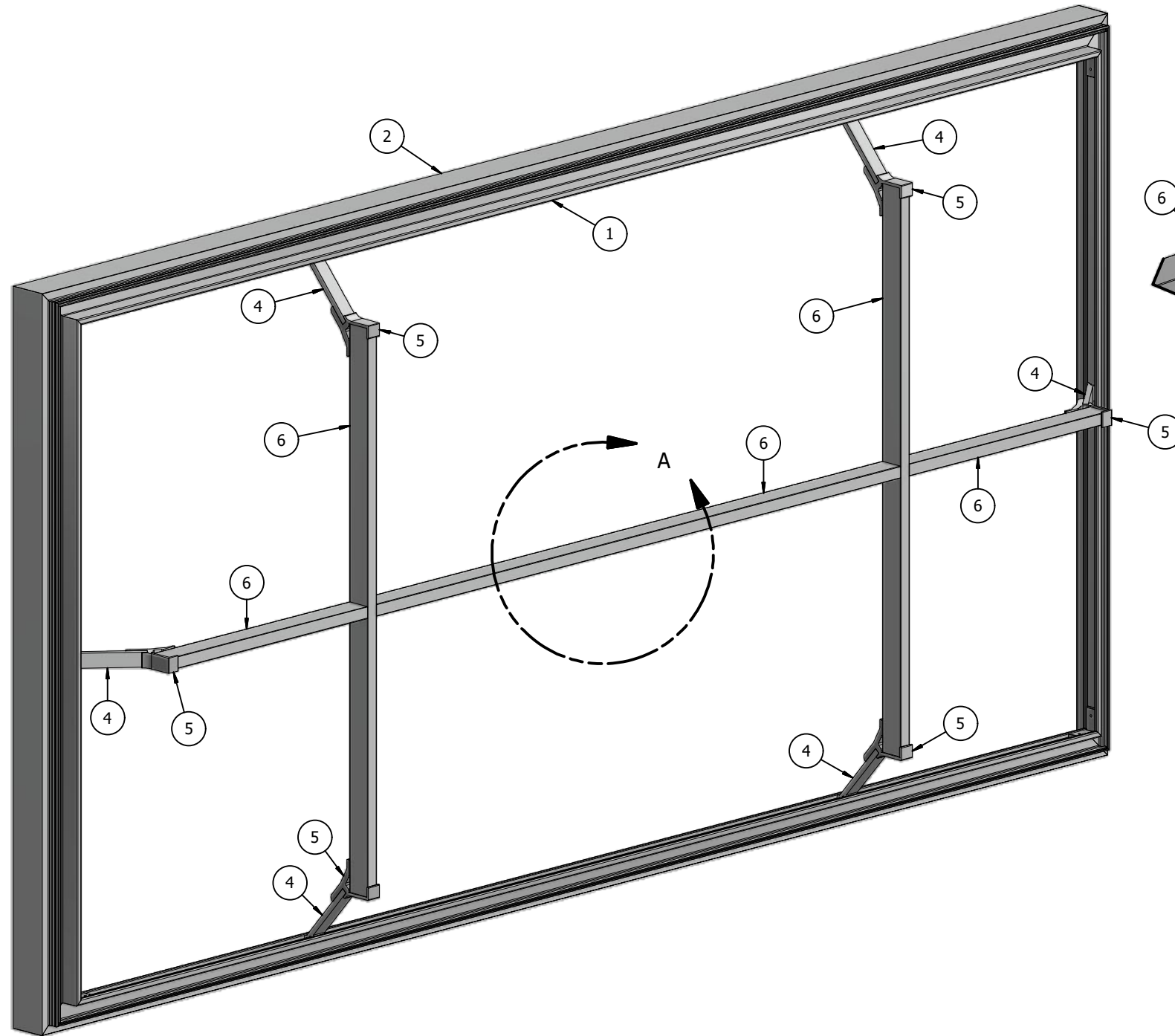
SignComp

WIDE BODY ONLY

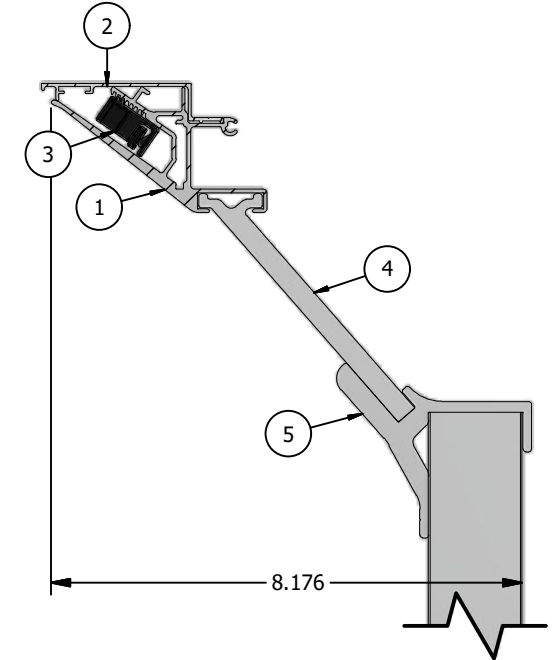
ITEM	PART #	DESCRIPTION
1	2086	Tension Frame II
2	2095	Bleed Tension Frame Cover
3	5360	Tension Clip
4	5357 - Arm	2 Piece Frame Brace - Arm
5	5357 - Yolk	2 Piece Frame Brace - Yolk
6	2175	Frame Support Tube - Vertical

NOTE: THE DETAIL BELOW SHOWS THE FRAME SUPPORT SYSTEM AS IT WOULD APPEAR IN A CABINET, WITH THE CENTER OF THE HORIZONTAL SUPPORTS CUT OUT AND BUILT OUT AROUND WHERE THE MAIN SUPPORT WOULD RUN. THIS DETAIL WOULD VARY DEPENDING ON THE SIZE OF SUPPORT USED.

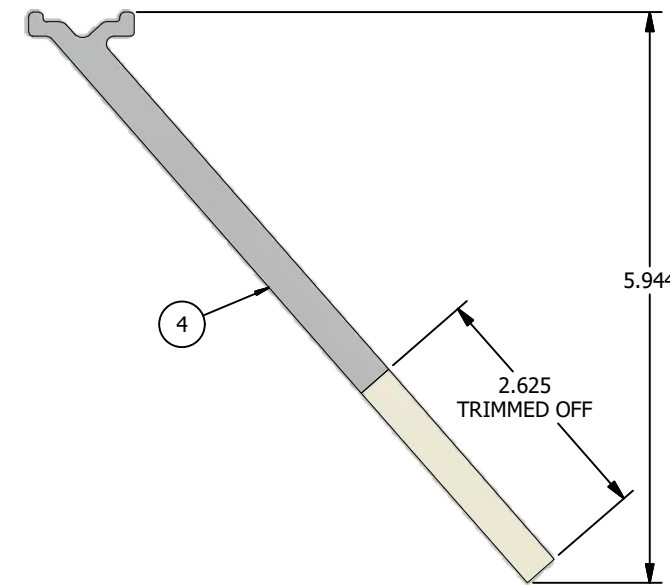
NOTE: All structural detailing for sign construction is the sole responsibility of the sign contractor. All details shown here should be considered as **DESIGN INTENT ONLY**. The sign fabricator shall provide engineering drawings stamped by a licenced structural engineer.



DETAIL A



FRAME CROSS-SECTION VERTICAL BRACING



PART #5357 - ARM TRIMMING DETAILS

NOTE: IN AN LED APPLICATION, IT IS IMPORTANT TO GET THE FRAME SUPPORTS RECESSED AS FAR BACK INTO THE CABINET AS POSSIBLE, SO IT'S NOT TO IMPEDE THE LIGHT PATH OF THE LEDS.

THIS DRAWING WAS CREATED AT NO CHARGE TO ASSIST YOU IN VISUALIZING OUR PROPOSAL. THE DRAWING HEREIN IS THE PROPERTY OF SIGNCOMP. PERMISSION TO COPY OR REVISE THIS DRAWING OR TO USE THIS DRAWING FOR PRODUCTION IS STRICTLY PROHIBITED AND CAN ONLY BE COPIED, REVISED OR USED FOR PRODUCTION WITH THE EXPRESSED WRITTEN PERMISSION OF SIGNCOMP.

Project Name: **Compression Bracing-5357 LEDs** Sheet: **1 of 1** Size: **B**
 Sign Company: **2086** Drawing By: **SBreihof** Date: **6/26/2019**

